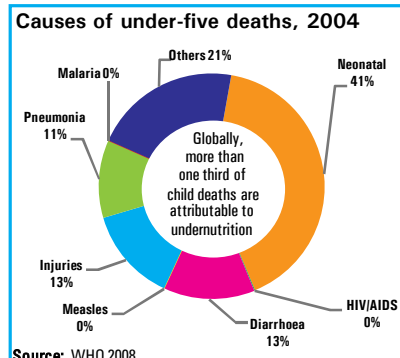
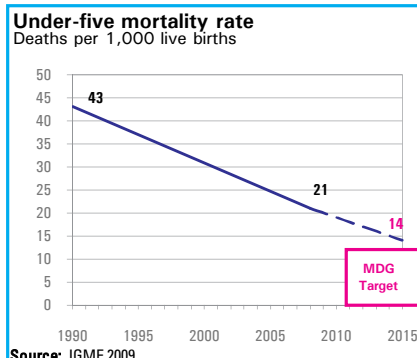


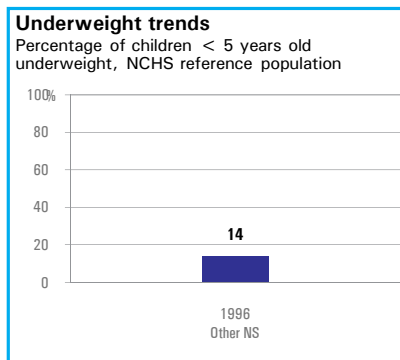
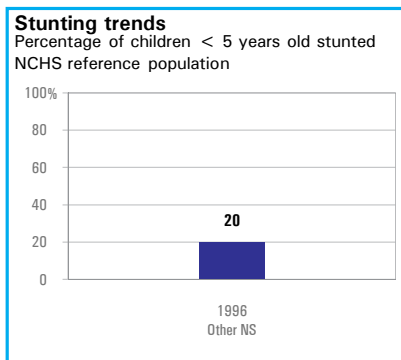
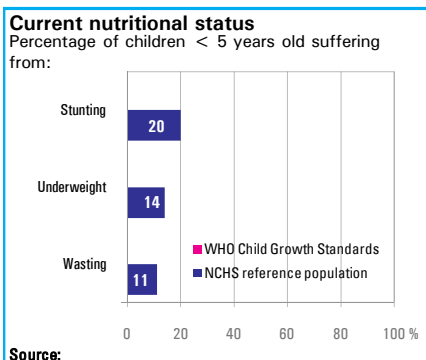
## DEMOGRAPHICS

Total population (000)	25,201	(2008)
Total under-five population (000)	2,859	(2008)
Total number of births (000)	591	(2008)
Under-five mortality rate (per 1,000 live births)	21	(2008)
Total number of under-five deaths (000)	12	(2008)
Infant mortality rate (per 1,000 live births)	18	(2008)
Neonatal mortality rate (per 1,000 live births)	11	(2004)
HIV prevalence rate (15-49 years, %)	-	-
Population below international poverty line of US\$1.25 per day (%)	-	-



## NUTRITIONAL STATUS

<b>Burden of undernutrition (2008)</b> WHO Child Growth Standards	Stunted (under-fives, 000):	569	Underweight (under-fives, 000):	409
	Share of developing world stunting burden (%):	0.3	Wasted (under-fives, 000):	306
	Stunting country rank:	53	Severely wasted (under-fives, 000):	63



## INFANT AND YOUNG CHILD FEEDING

### Infant feeding practices, by age

No Data

- Weaned (not breastfed)
- Breastfed and non-milk liquids
- Breastfed and solid/semi-solid foods
- Breastfed and plain water only
- Breastfed and other milk/formula
- Exclusively breastfed

### Exclusive breastfeeding

Percentage of infants < 6 months old exclusively breastfed

Year	Percentage of infants < 6 months old exclusively breastfed (%)
1996	31
Other NS	31

