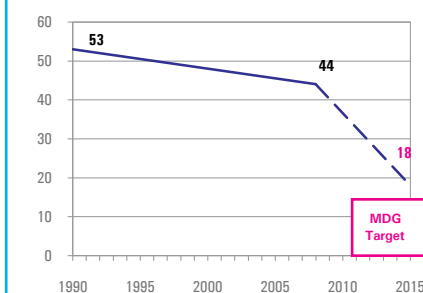


DEMOGRAPHICS

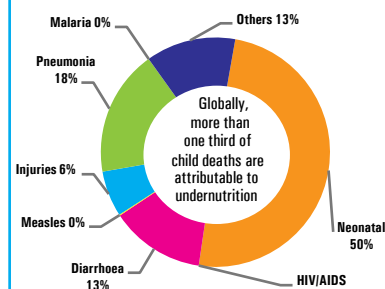
Total population (000)	30,096	(2008)
Total under-five population (000)	4,450	(2008)
Total number of births (000)	944	(2008)
Under-five mortality rate (per 1,000 live births)	44	(2008)
Total number of under-five deaths (000)	41	(2008)
Infant mortality rate (per 1,000 live births)	36	(2008)
Neonatal mortality rate (per 1,000 live births)	63	(2004)
HIV prevalence rate (15-49 years, %)	-	-
Population below international poverty line of US\$1.25 per day (%)	-	-

Under-five mortality rate
Deaths per 1,000 live births



Source: IGME 2009

Causes of under-five deaths, 2004



Source: WHO 2008

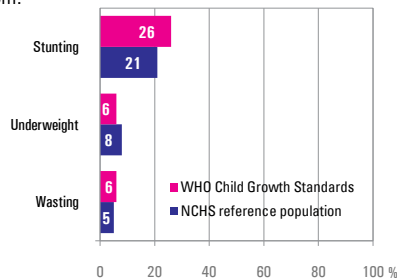
NUTRITIONAL STATUS

Burden of undernutrition (2008)
WHO Child Growth Standards

Stunted (under-fives, 000):	1,175	Underweight (under-fives, 000):	285
Share of developing world stunting burden (%):	0.6	Wasted (under-fives, 000):	249
Stunting country rank:	27	Severely wasted (under-fives, 000):	116

Current nutritional status

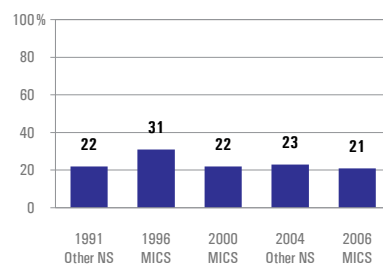
Percentage of children < 5 years old suffering from:



Source: MICS 2006

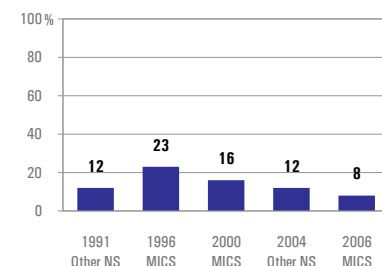
Stunting trends

Percentage of children < 5 years old stunted
NCHS reference population



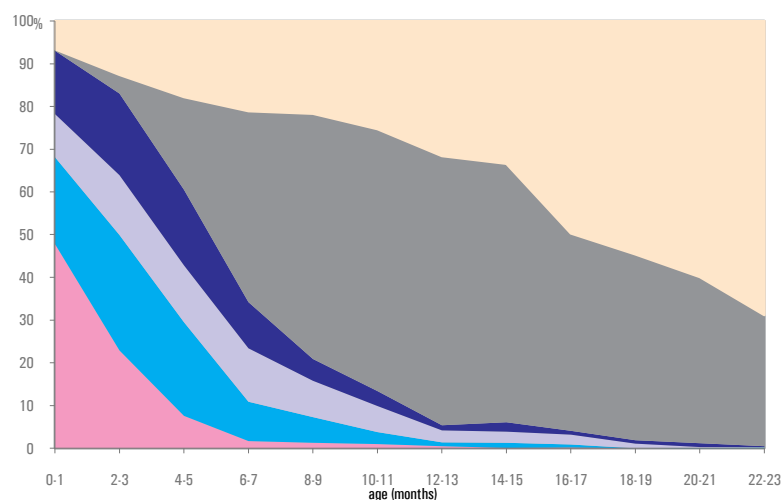
Underweight trends

Percentage of children < 5 years old underweight, NCHS reference population



INFANT AND YOUNG CHILD FEEDING

Infant feeding practices, by age



Source: MICS 2006

Exclusive breastfeeding

Percentage of infants < 6 months old exclusively breastfed

