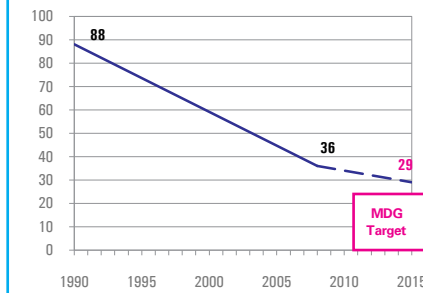


DEMOGRAPHICS

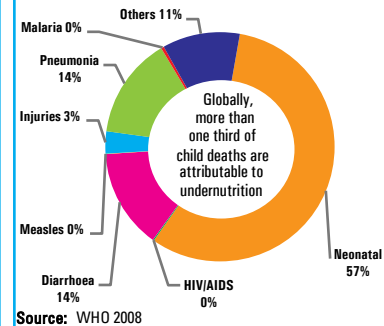
Total population (000)	31,606	(2008)
Total under-five population (000)	3,041	(2008)
Total number of births (000)	646	(2008)
Under-five mortality rate (per 1,000 live births)	36	(2008)
Total number of under-five deaths (000)	24	(2008)
Infant mortality rate (per 1,000 live births)	32	(2008)
Neonatal mortality rate (per 1,000 live births)	24	(2004)
HIV prevalence rate (15-49 years, %)	0.1	(2007)
Population below international poverty line of US\$1.25 per day (%)	3	(2007)

Under-five mortality rate

Deaths per 1,000 live births



Causes of under-five deaths, 2004



NUTRITIONAL STATUS

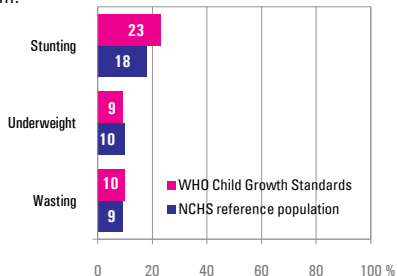
Burden of undernutrition (2008)

WHO Child Growth Standards

Stunted (under-fives, 000):	684	Underweight (under-fives, 000):	262
Share of developing world stunting burden (%):	0.4	Wasted (under-fives, 000):	304
Stunting country rank:	45	Severely wasted (under-fives, 000):	131

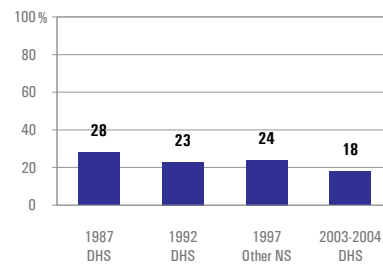
Current nutritional status

Percentage of children < 5 years old suffering from:



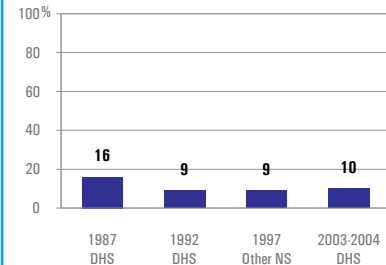
Stunting trends

Percentage of children < 5 years old stunted NCHS reference population



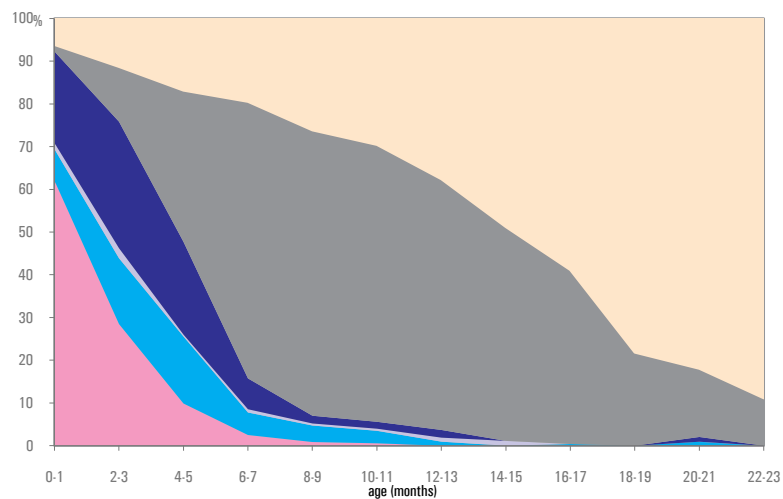
Underweight trends

Percentage of children < 5 years old underweight, NCHS reference population



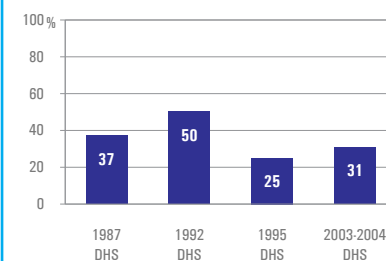
INFANT AND YOUNG CHILD FEEDING

Infant feeding practices, by age



Exclusive breastfeeding

Percentage of infants < 6 months old exclusively breastfed

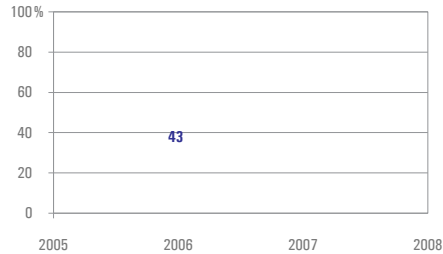


Morocco

MICRONUTRIENTS

Vitamin A supplementation

Percentage of children 6-59 months old receiving two doses of vitamin A during calendar year

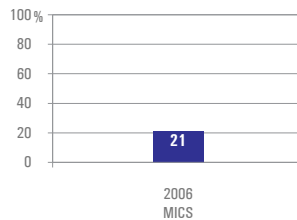


Source: UNICEF 2009

Iodized salt consumption trends*

Percentage of households consuming adequately iodized salt

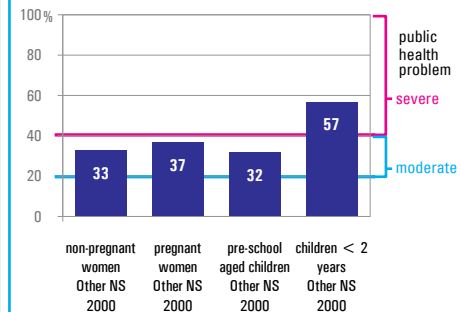
509,000 newborns are unprotected against IDD (2008)



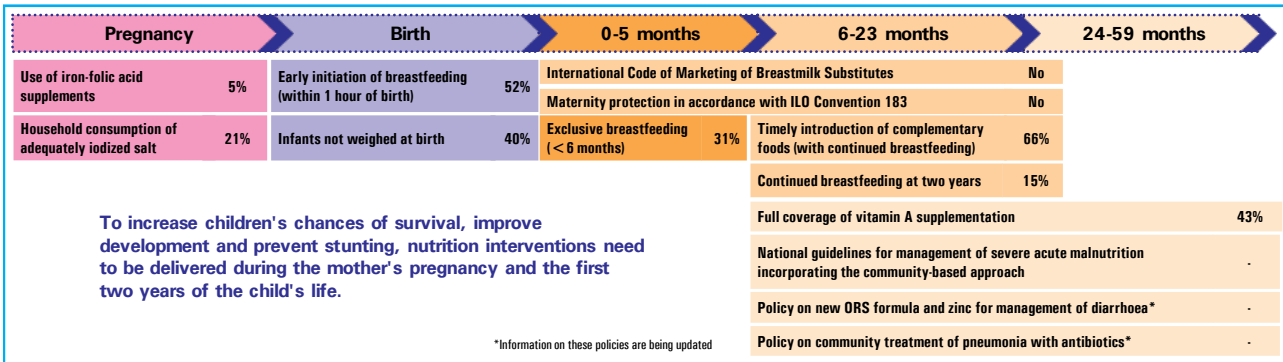
* Estimates may not be comparable.

Anaemia

Prevalence of anaemia among selected populations



ESSENTIAL NUTRITION INTERVENTIONS DURING THE LIFE CYCLE



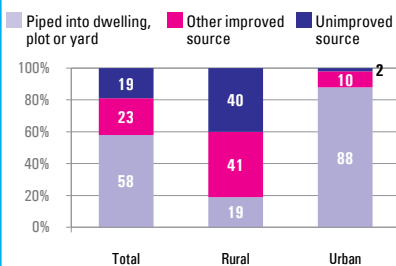
MATERNAL NUTRITION/HEALTH

WATER AND SANITATION

Maternal mortality ratio, adjusted (per 100,000 live births)	240	(2005)
Maternal mortality ratio, reported (per 100,000 live births)	230	(1994-2003)
Total number of maternal deaths	1,700	(2005)
Lifetime risk of maternal deaths (1 in :)	150	(2005)
Women with low BMI (< 18.5 kg/m ² , %)	7	(2003-2004)
Anaemia, non-pregnant woman (< 120 g/l, %)	33	(2000)
Antenatal care (at least one visit, %)	68	(2003-2004)
Antenatal care (at least four visits, %)	31	(2003-2004)
Skilled attendant at birth (%)	63	(2003-2004)
Low birthweight (< 2,500 grams, %)	15	(2003-2004)
Primary school net enrolment or attendance ratio (% female, % male)	86, 91	(2007)
Gender parity index (primary school net enrolment or attendance ratio)	0.95	(2007)

Drinking water coverage

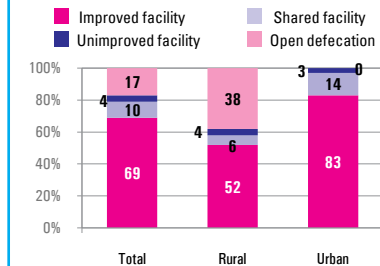
Percentage of population by type of drinking water source, 2008



Source: WHO/UNICEF JMP, 2010

Sanitation coverage

Percentage of population by type of sanitation facility, 2008



Source: WHO/UNICEF JMP, 2010

Under-five deaths caused by: Diarrhoea: 14% Pneumonia: 14%

DISPARITIES IN NUTRITION

Indicator	Gender			Residence			Wealth quintile						Source
	Male	Female	Ratio of male to female	Urban	Rural	Ratio of urban to rural	Poorest	Second	Middle	Fourth	Richest	Ratio of richest to poorest	
Stunting prevalence (WHO Child Growth Standards, %)	24	21	1.1	16	29	0.6	35	25	20	15	13	0.4	DHS 2003-2004
Underweight prevalence (WHO Child Growth Standards, %)	9	8	1.1	6	12	0.5	15	9	7	7	3	0.2	DHS 2003-2004
Wasting prevalence (WHO Child Growth Standards, %)	10	10	1.0	9	12	0.8	13	10	10	9	7	0.5	DHS 2003-2004
Infants not weighed at birth (%)	-	-	-	17	63	0.3	73	54	33	16	6	0.1	DHS 2003-2004
Early initiation of breastfeeding (%)	53	52	1.0	46	58	0.8	56	57	54	48	41	0.7	DHS 2003-2004
Women with low BMI (< 18.5 kg/m ² , %)	-	7	-	7	8	0.9	8	8	7	7	6	0.8	DHS 2003-2004