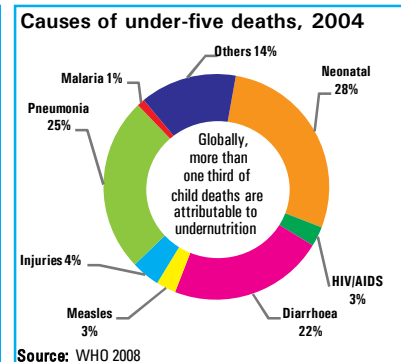
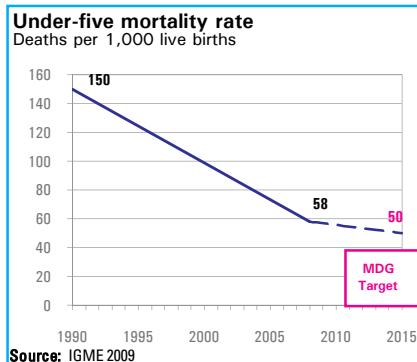


### DEMOGRAPHICS

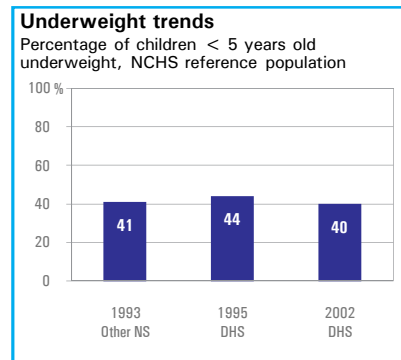
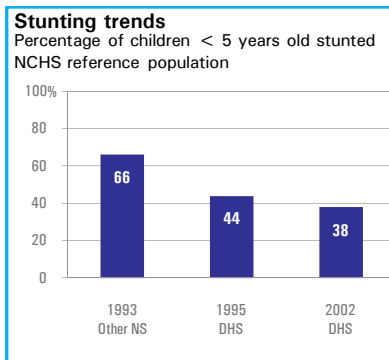
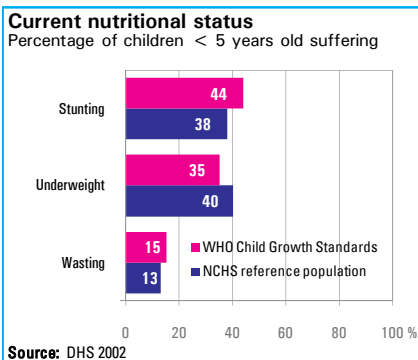
Total population (000)	4,927	(2008)
Total under-five population (000)	811	(2008)
Total number of births (000)	182	(2008)
Under-five mortality rate (per 1,000 live births)	58	(2008)
Total number of under-five deaths (000)	10	(2008)
Infant mortality rate (per 1,000 live births)	41	(2008)
Neonatal mortality rate (per 1,000 live births)	21	(2004)
HIV prevalence rate (15-49 years, %)	1.3	(2007)
Population below international poverty line of US\$1.25 per day (%)	-	-



### NUTRITIONAL STATUS

**Burden of undernutrition (2008)**  
WHO Child Growth Standards

Stunted (under-fives, 000):	354	Underweight (under-fives, 000):	280
Share of developing world stunting burden (%):	0.2	Wasted (under-fives, 000):	121
Stunting country rank:	60	Severely wasted (under-fives, 000):	38



### INFANT AND YOUNG CHILD FEEDING

#### Infant feeding practices, by age

- Weaned (not breastfed)
- Breastfed and solid/semi-solid foods
- Breastfed and other milk/formula
- Breastfed and non-milk liquids
- Breastfed and plain water only
- Exclusively breastfed

No Data

