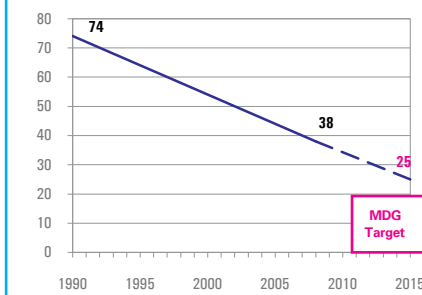


DEMOGRAPHICS

| | | |
|---|--------|--------|
| Total population (000) | 27,191 | (2008) |
| Total under-five population (000) | 2,576 | (2008) |
| Total number of births (000) | 553 | (2008) |
| Under-five mortality rate (per 1,000 live births) | 38 | (2008) |
| Total number of under-five deaths (000) | 21 | (2008) |
| Infant mortality rate (per 1,000 live births) | 34 | (2008) |
| Neonatal mortality rate (per 1,000 live births) | 26 | (2004) |
| HIV prevalence rate (15-49 years, %) | 0.1 | (2007) |
| Population below international poverty line of US\$1.25 per day (%) | 46 | (2003) |

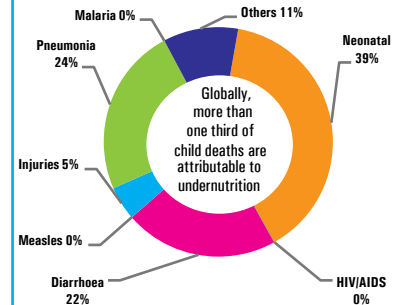
Under-five mortality rate

Deaths per 1,000 live births



Source: IGME 2009

Causes of under-five deaths, 2004



Source: WHO 2008

NUTRITIONAL STATUS

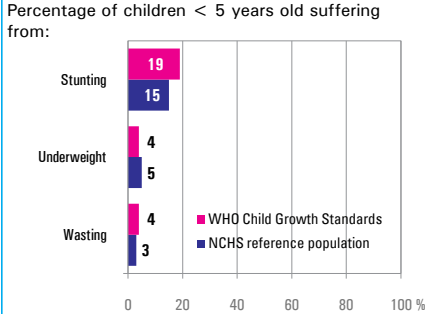
Burden of undernutrition (2008)

WHO Child Growth Standards

| | | | |
|--|-----|-------------------------------------|-----|
| Stunted (under-fives, 000): | 489 | Underweight (under-fives, 000): | 103 |
| Share of developing world stunting burden (%): | 0.3 | Wasted (under-fives, 000): | 108 |
| Stunting country rank: | 55 | Severely wasted (under-fives, 000): | 39 |

Current nutritional status

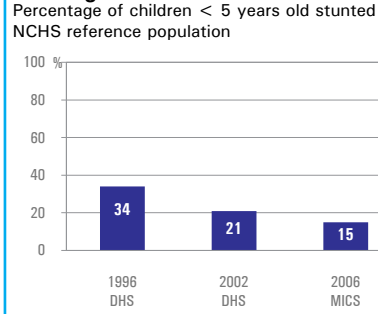
Percentage of children < 5 years old suffering from:



Source: MICS 2006

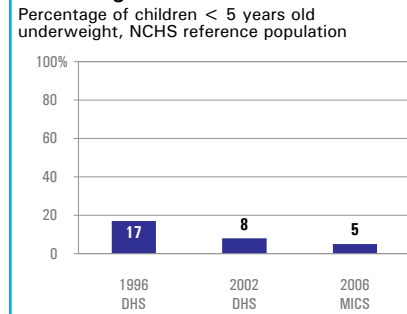
Stunting trends

Percentage of children < 5 years old stunted NCHS reference population



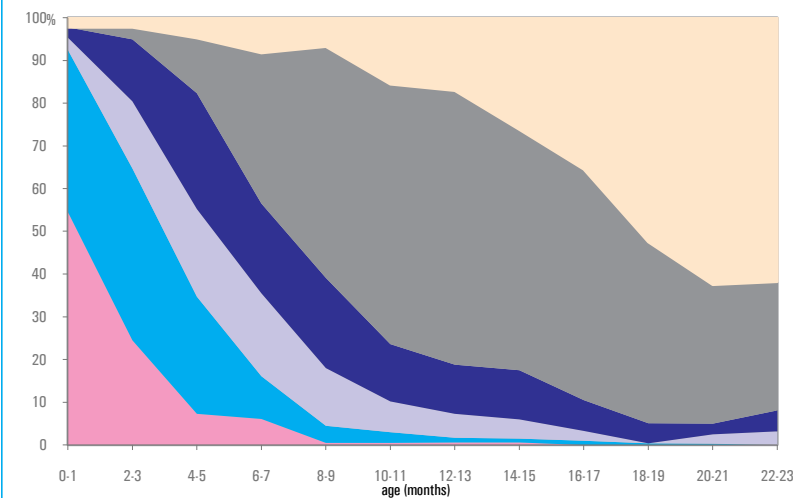
Underweight trends

Percentage of children < 5 years old underweight, NCHS reference population



INFANT AND YOUNG CHILD FEEDING

Infant feeding practices, by age



Source: MICS 2006

Exclusive breastfeeding

Percentage of infants < 6 months old exclusively breastfed

