

# Sao Tome and Principe

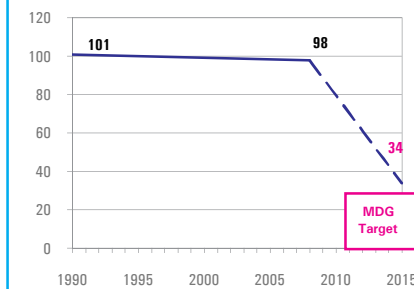
## Nutrition Profile

### DEMOGRAPHICS

Total population (000)	160	(2008)
Total under-five population (000)	23	(2008)
Total number of births (000)	5	(2008)
Under-five mortality rate (per 1,000 live births)	98	(2008)
Total number of under-five deaths (000)	0	(2008)
Infant mortality rate (per 1,000 live births)	64	(2008)
Neonatal mortality rate (per 1,000 live births)	38	(2004)
HIV prevalence rate (15-49 years, %)	-	-
Population below international poverty line of US\$1.25 per day (%)	-	-

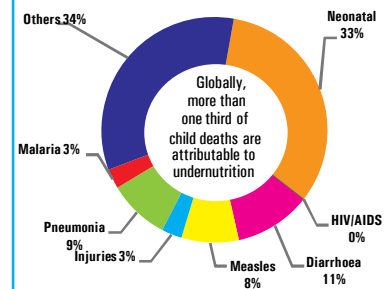
#### Under-five mortality rate

Deaths per 1,000 live births



Source: IGME 2009

#### Causes of under-five deaths, 2004



Source: WHO 2008

### NUTRITIONAL STATUS

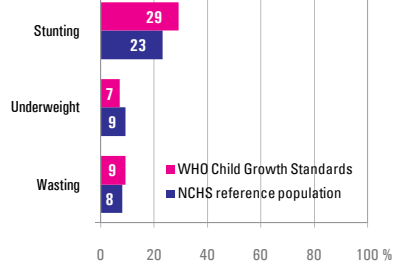
#### Burden of undernutrition (2008)

WHO Child Growth Standards

Stunted (under-fives, 000):	7	Underweight (under-fives, 000):	2
Share of developing world stunting burden (%):	0.0	Wasted (under-fives, 000):	2
Stunting country rank:	127	Severely wasted (under-fives, 000):	1

#### Current nutritional status

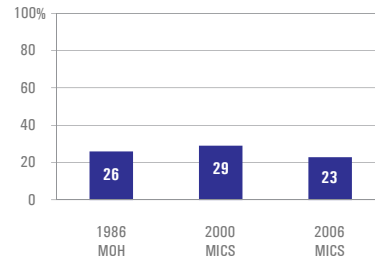
Percentage of children < 5 years old suffering from:



Source: MICS 2006

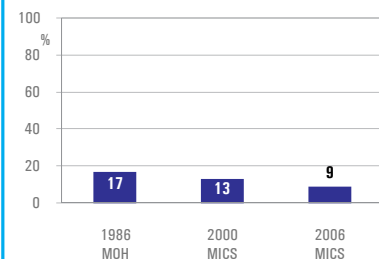
#### Stunting trends

Percentage of children < 5 years old stunted NCHS reference population



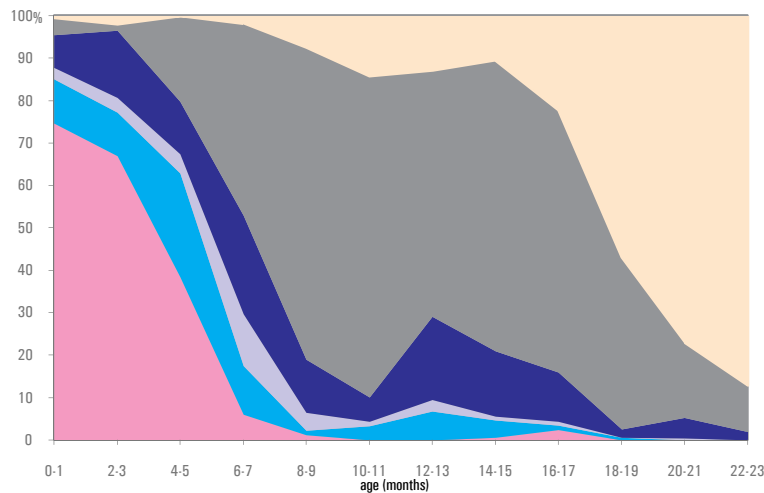
#### Underweight trends

Percentage of children < 5 years old underweight, NCHS reference population



### INFANT AND YOUNG CHILD FEEDING

#### Infant feeding practices, by age



Source: MICS 2006

#### Exclusive breastfeeding

Percentage of infants < 6 months old exclusively breastfed

