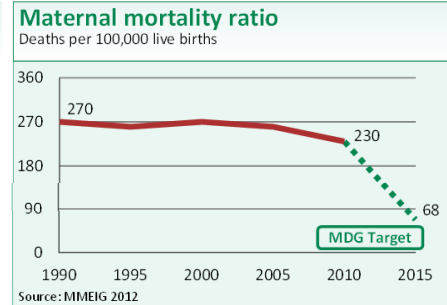
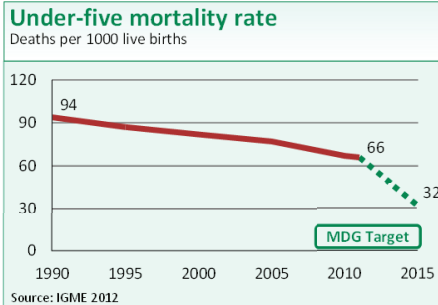




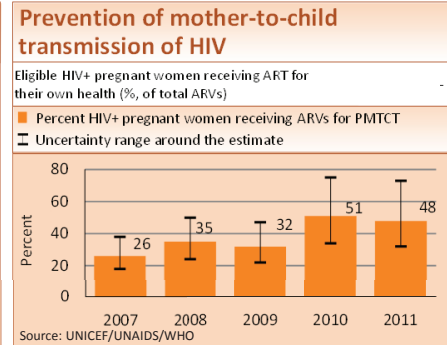
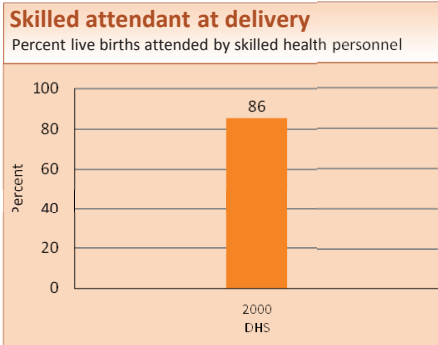
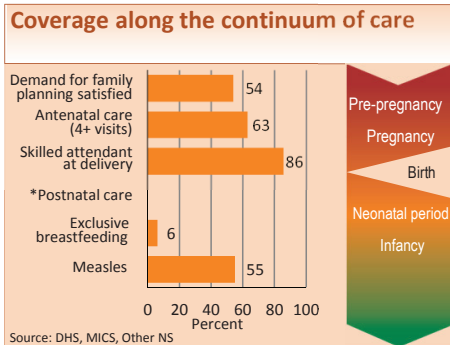
DEMOGRAPHICS

Total population (000)	1,534	(2011)
Total under-five population (000)	188	(2011)
Births (000)	42	(2011)
Birth registration (%)	89	(2009)
Total under-five deaths (000)	3	(2011)
Neonatal deaths: % of all under-5 deaths	39	(2011)
Neonatal mortality rate (per 1000 live births)	25	(2011)
Infant mortality rate (per 1000 live births)	49	(2011)
Stillbirth rate (per 1000 total births)	17	(2009)
Total maternal deaths	94	(2010)
Lifetime risk of maternal death (1 in N)	130	(2010)
Total fertility rate (per woman)	3.2	(2011)
Adolescent birth rate (per 1000 women)	144	(1998)

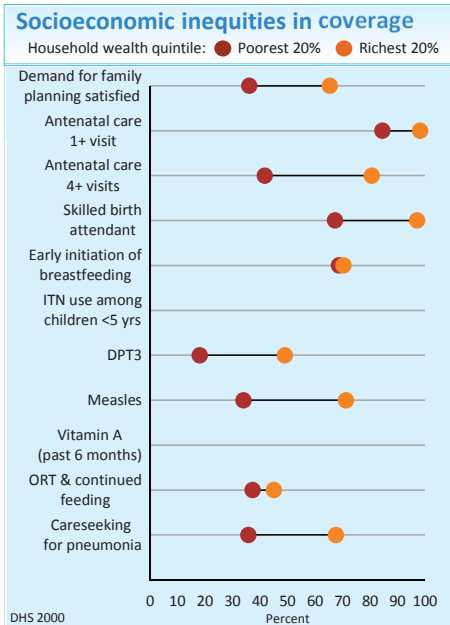


Note: MDG target calculated by Countdown to 2015.

MATERNAL AND NEWBORN HEALTH



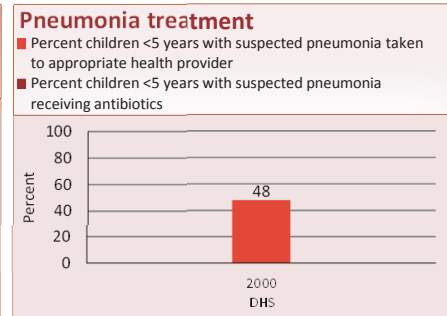
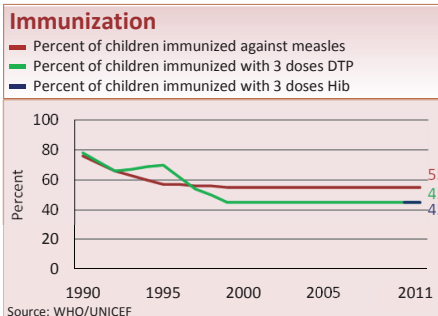
EQUITY



Coverage levels are shown for the poorest 20% (red circles) and the richest 20% (orange circles). The longer the line between the two groups, the greater the inequity. These estimates may differ from other charts due to differences in data sources.

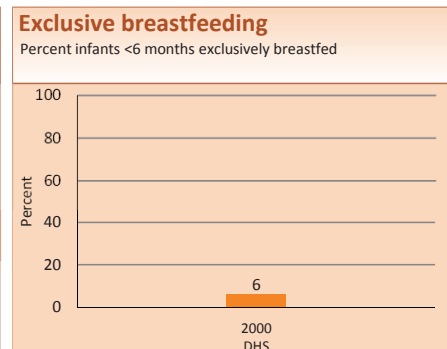
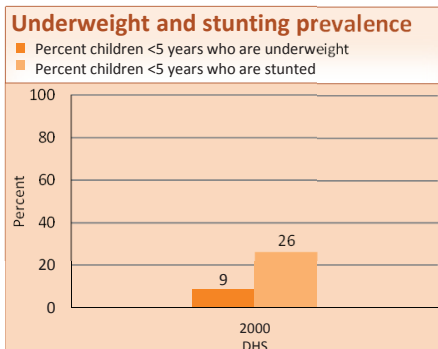
Developed by Countdown to report on core indicators identified by the UN Commission on Information and Accountability, in support of the Global Strategy for Women's and Children's Health

CHILD HEALTH



NUTRITION

Wasting prevalence (moderate and severe, %)	4	(2000)	Early initiation of breastfeeding (within 1 hr of birth, %)	71	(2000)
Low birthweight incidence (moderate and severe, %)	14	(2000)	Introduction of solid, semi-solid/soft foods (%)	62	(2000)
			Vitamin A two dose coverage (%)	-	-



Note: Based on 2006 WHO reference population