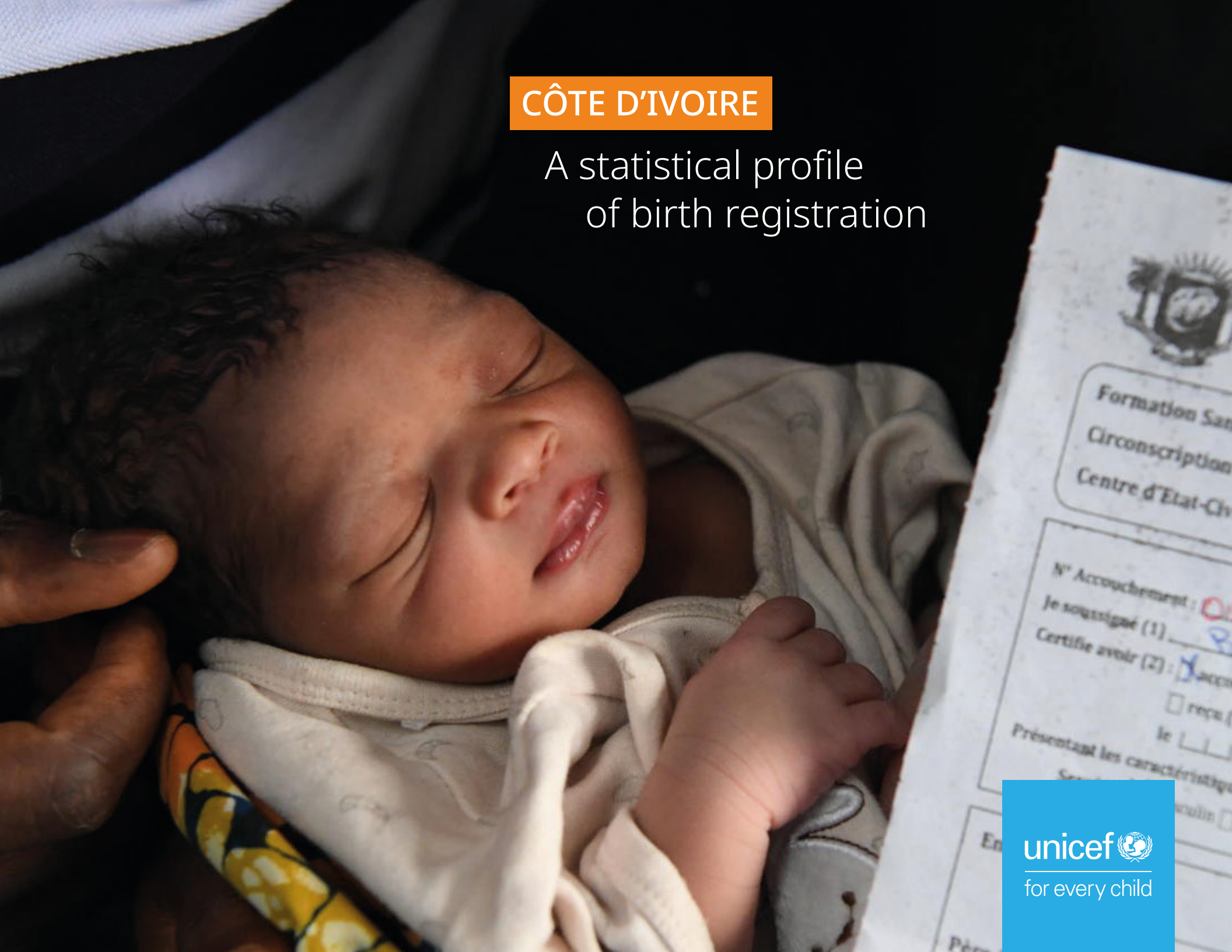


CÔTE D'IVOIRE

A statistical profile of birth registration



CÔTE D'IVOIRE

A statistical profile of birth registration



This data brief presents the latest available survey data on current levels of birth registration and certification in Côte d'Ivoire. It also includes trends in prevalence over time. The analyses presented here are focused on registration and certification among infants, as national priorities and strategies related to birth registration are primarily concentrated on these youngest children. This publication is part of a series of data briefs on birth registration produced for a subset of countries, selected on the basis of data availability and targeted for strategic action to strengthen birth registration systems.



1. CURRENT LEVELS OF BIRTH REGISTRATION AND CERTIFICATION



2. ASSESSING PROGRESS



TECHNICAL NOTES

SOURCES OF BIRTH REGISTRATION DATA IN CÔTE D'IVOIRE

There are two main sources of information on birth registration and certification in Côte d'Ivoire. The first are large-scale household surveys implemented as part of two international survey programmes: the Multiple Indicator Cluster Survey (MICS) and the Demographic and Health Survey (DHS). In both survey programmes, respondents are asked about children's possession of a birth certificate and registration with the national civil authorities. The resulting prevalence estimates are sensitive to the way in which questions are formulated and interpreted by respondents. This is especially true of questions regarding the civil authorities in charge of recording births in a country as respondents may not always be clear on who these authorities are and may misinterpret birth notification or declaration (to a church or village chef, for example) as formal registration, which it is not. This would result in an overestimate of the level of birth registration. Despite this, household surveys remain an important and useful source of such data, particularly in countries where the completeness and accuracy of recording births as part of national civil registration systems remains a serious challenge.

The second source of information are vital statistics drawn from the national civil registration system. In Côte d'Ivoire, the national authority for civil registration is the Ministry of Interior and Security which publishes annual statistics on the number of births registered

with civil registry offices within a calendar year.¹ The estimates of annual birth registration levels are calculated by dividing the number of births registered within a 12-month period by the expected/estimated total number of births that occurred within that same 12-month period.

The latest survey-based estimate (from DHS 2021) of the percentage of infants under age 1 whose births are registered is 95 per cent. The (roughly) equivalent estimate of the percentage of infants (i.e., ages 0 to 11 months) born in 2021 whose births were registered in 2021 from the national civil registration system was significantly lower at 68 per cent.² The source

of such discrepancy has not been fully assessed and determined. National-level efforts to improve birth registration in Côte d'Ivoire are primarily informed by the data produced by the national civil registration system. That said, this publication relies on the DHS 2021 (and other household survey data) as the latest officially endorsed data source for global monitoring and reporting on the Sustainable Development Goal (SDG) indicator 16.9.1. In addition, survey data also allow for a more detailed analysis of how birth registration relates to other child and family demographic characteristics that are particularly useful for informing national policy and programming.





1. CURRENT LEVELS OF BIRTH REGISTRATION AND CERTIFICATION

FIGURES

STATISTICS ON CHILDREN UNDER 1

- 1.1 Percentage of infants under age 1 whose births are registered and infants under age 1 with a birth certificate
- 1.2 Percentage distribution and number of infants under age 1, by registration status
- 1.3 Percentage of infants under age 1 whose births are registered, by district
- 1.4 Percentage of infants under age 1 who have a birth certificate, by district
- 1.5 Percentage of infants under age 1 with a birth certificate, by background characteristics

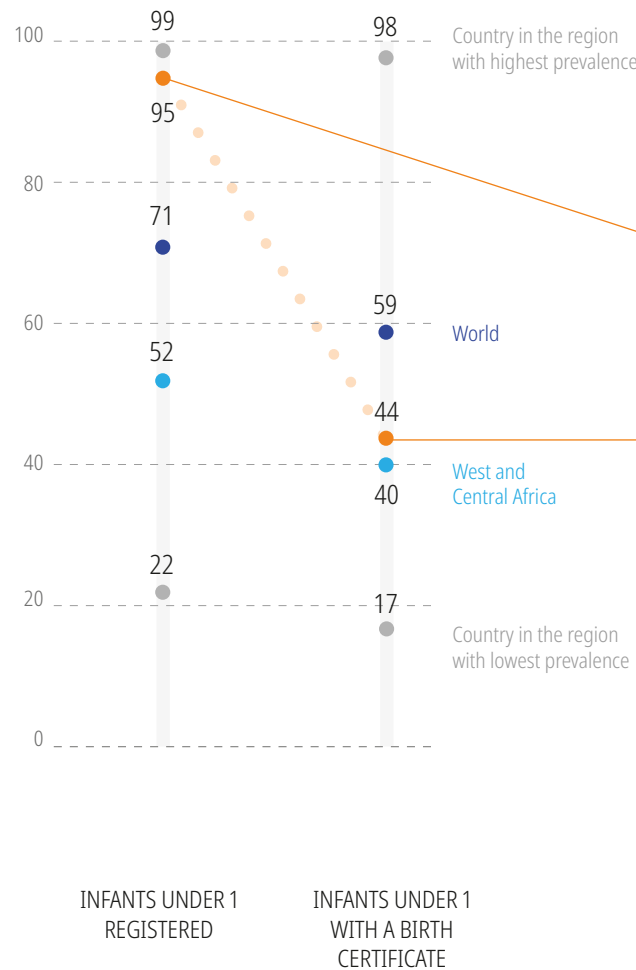




While levels of birth registration among infants in Côte d'Ivoire are among the highest in the region, there is a striking difference with certification which falls below 50 per cent in the country

FIGURE 1.1

Percentage of infants under age 1 whose births are registered and infants under age 1 with a birth certificate



CÔTE D'IVOIRE

REGISTERED

95%

44%

WITH A BIRTH CERTIFICATE

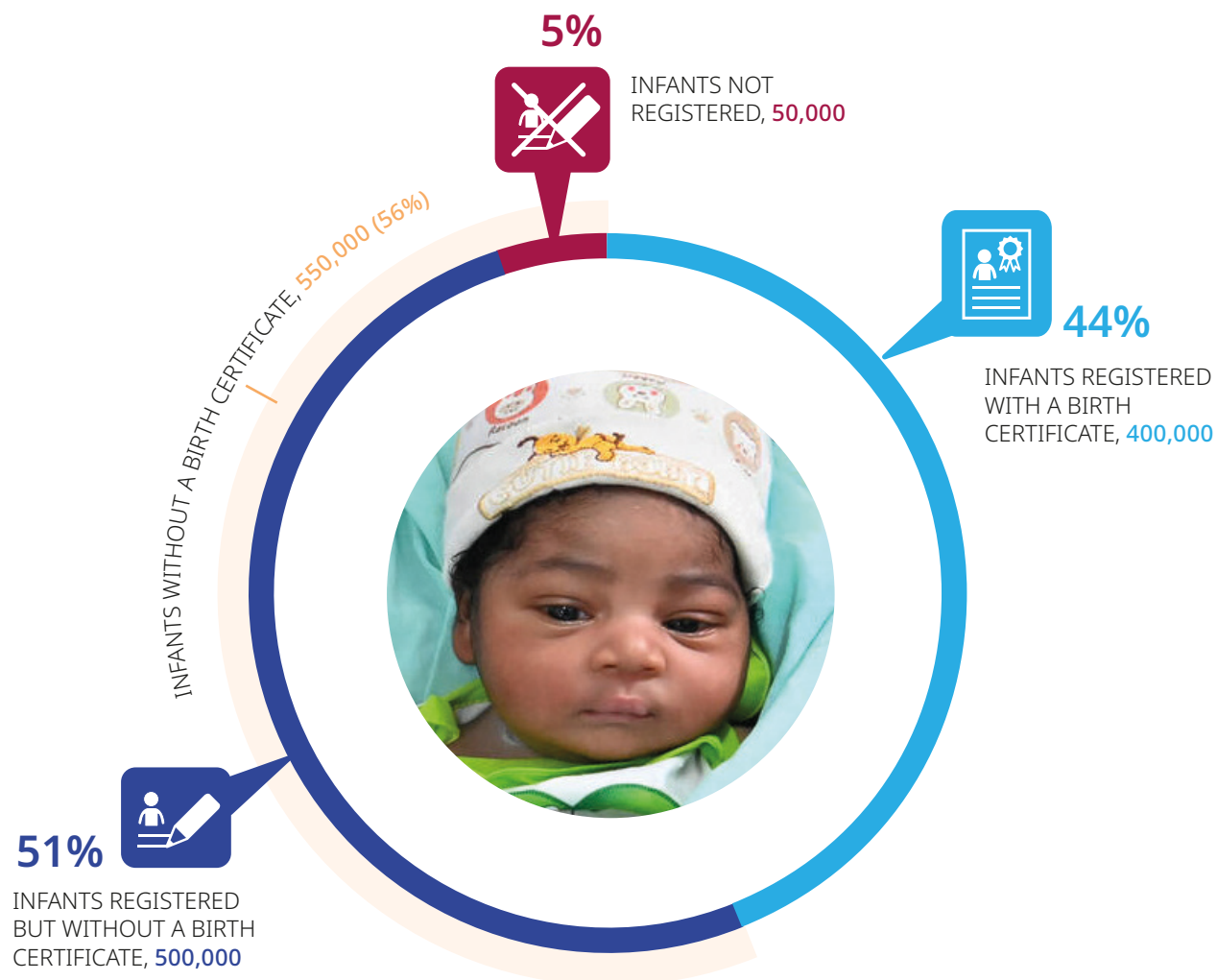




Côte d'Ivoire is home to 550,000 infants without a birth certificate. This includes 50,000 unregistered infants and half a million infants whose births are reported as registered but lack proof in the form of a birth certificate

FIGURE 1.2

Percentage distribution and number of infants under age 1, by registration status





Prevalence of birth registration among infants exceeds 80 percent in all districts, but prevalence of birth certification is below 80 per cent in all districts

FIGURE 1.3

Percentage of infants under age 1 whose births are registered, by district

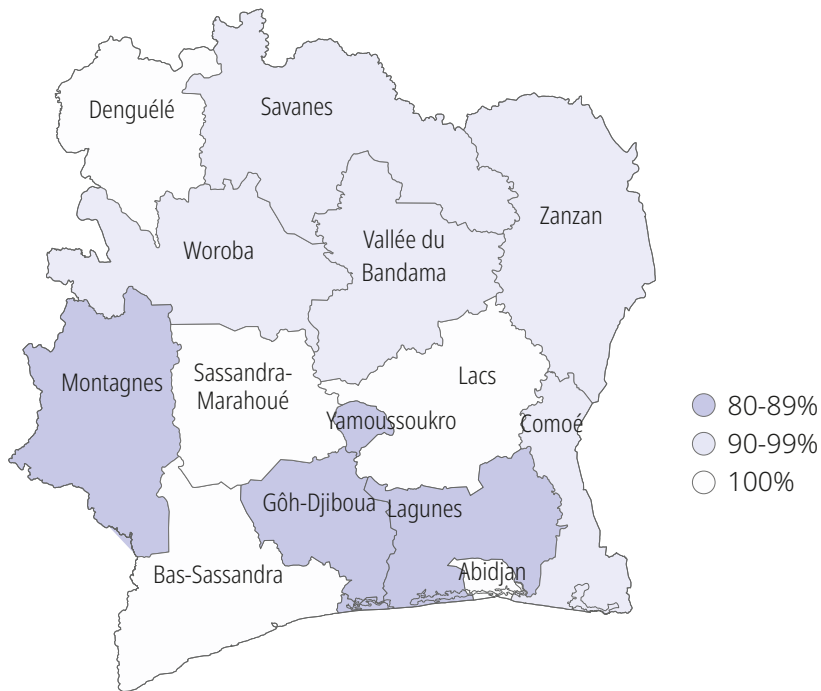
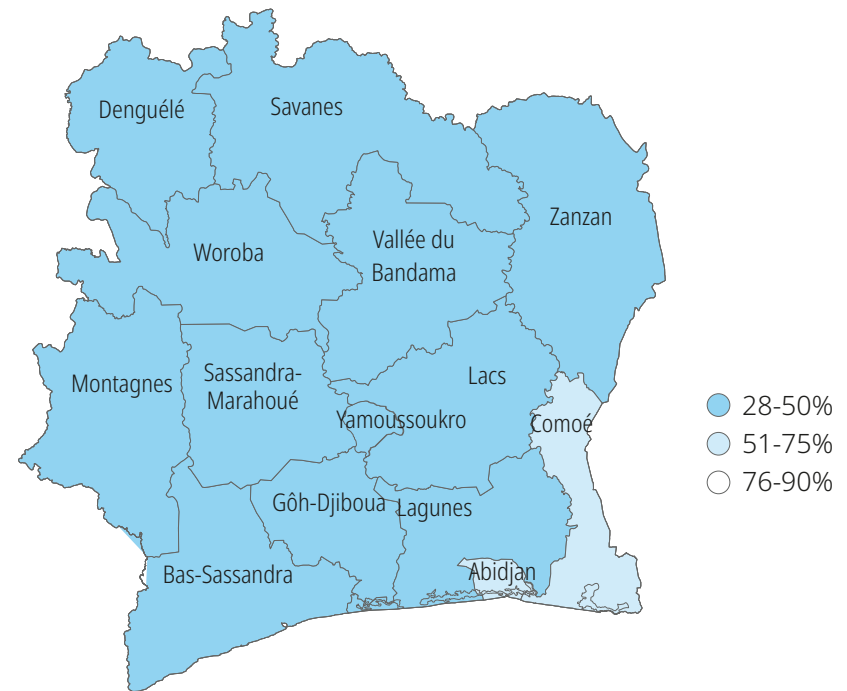


FIGURE 1.4

Percentage of infants under age 1 who have a birth certificate, by district



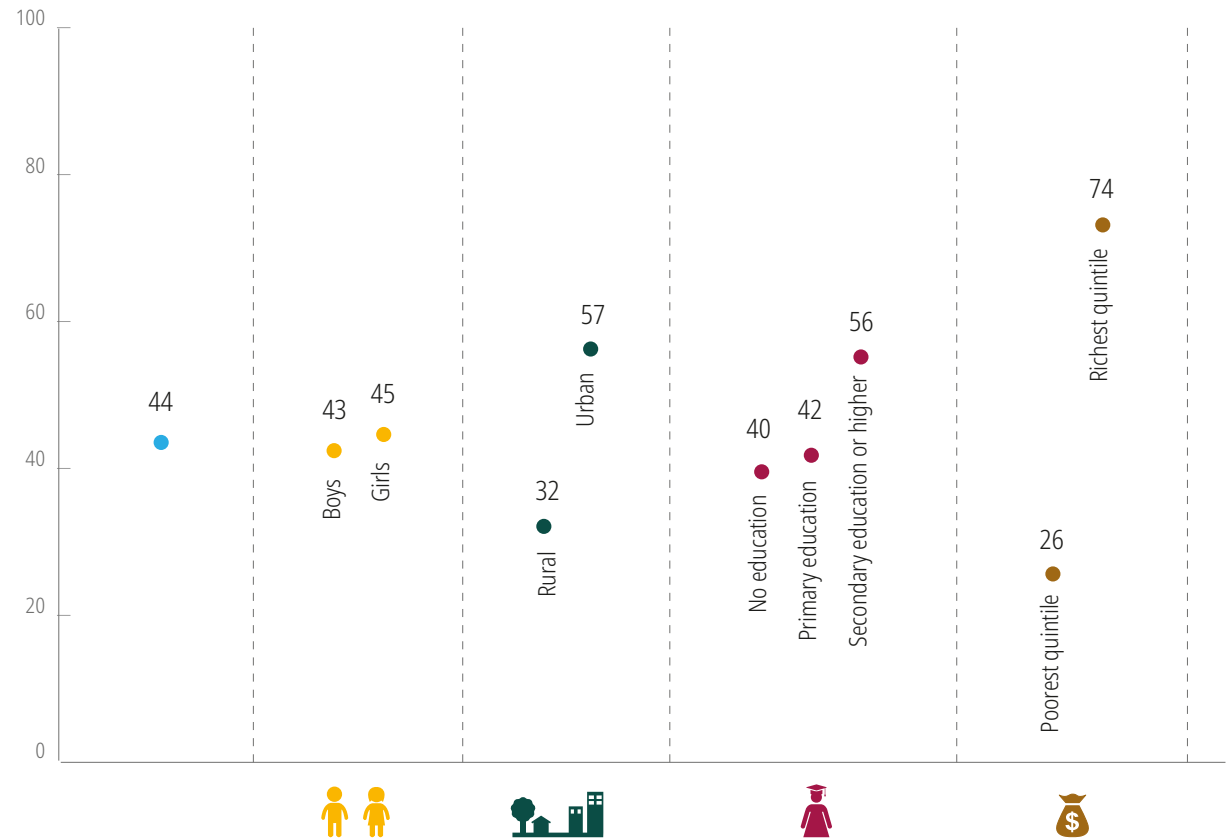


Given high levels of registration overall, no differences are found by background characteristics

Inequities emerge, however, when looking at levels of certification: Infants are much less likely to possess a birth certificate when they live in rural areas, are from the poorest households or have mothers with no or only primary education

FIGURE 1.5

Percentage of infants under age 1 with a birth certificate, by background characteristics





© UNICEF/UNI525460/Dejongh

2. ASSESSING PROGRESS

FIGURES

STATISTICS ON CHILDREN UNDER 1

- 2.1 Percentage of infants under age 1 with a birth certificate
- 2.2 Percentage of infants under age 1 with a birth certificate, by household wealth quintile
- 2.3 Percentage of infants under age 1 with a birth certificate, by place of residence

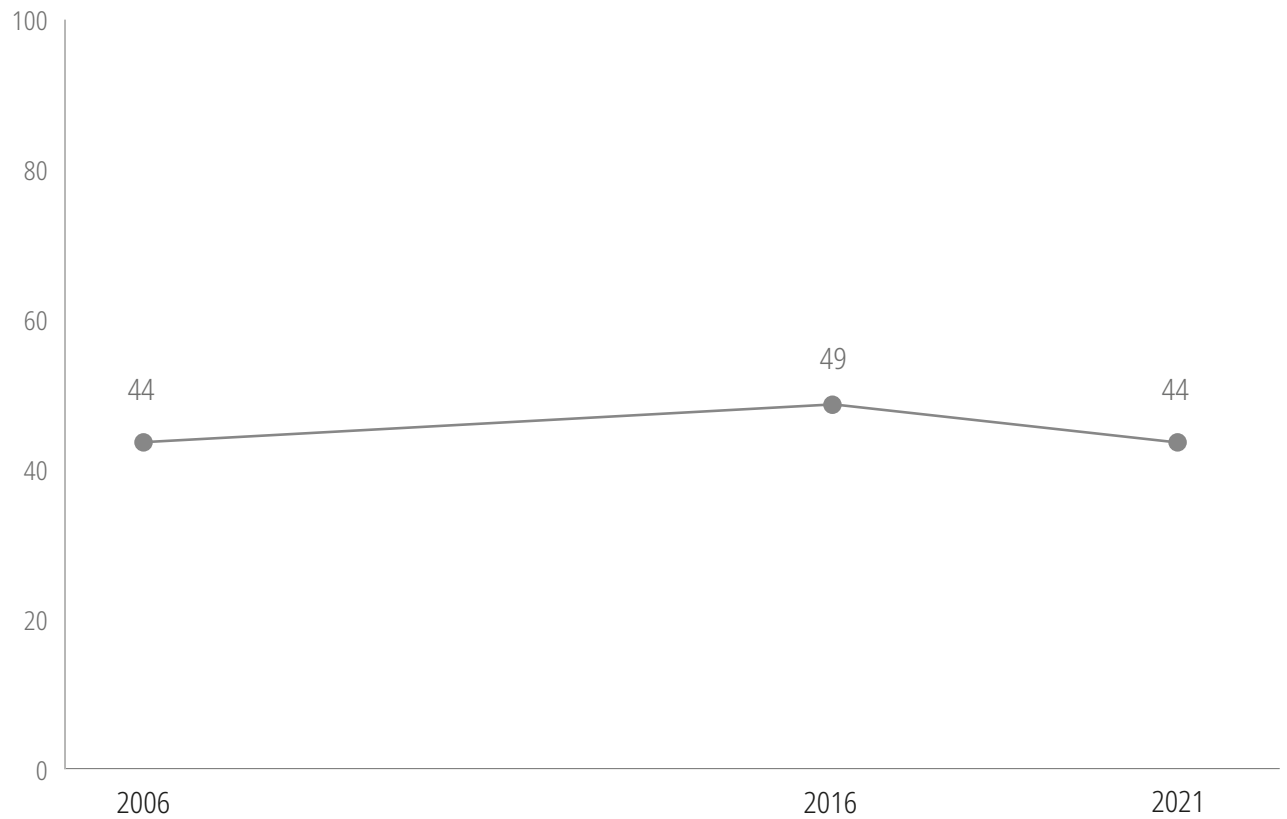




The level of birth certification among infants has stagnated over time

FIGURE 2.1

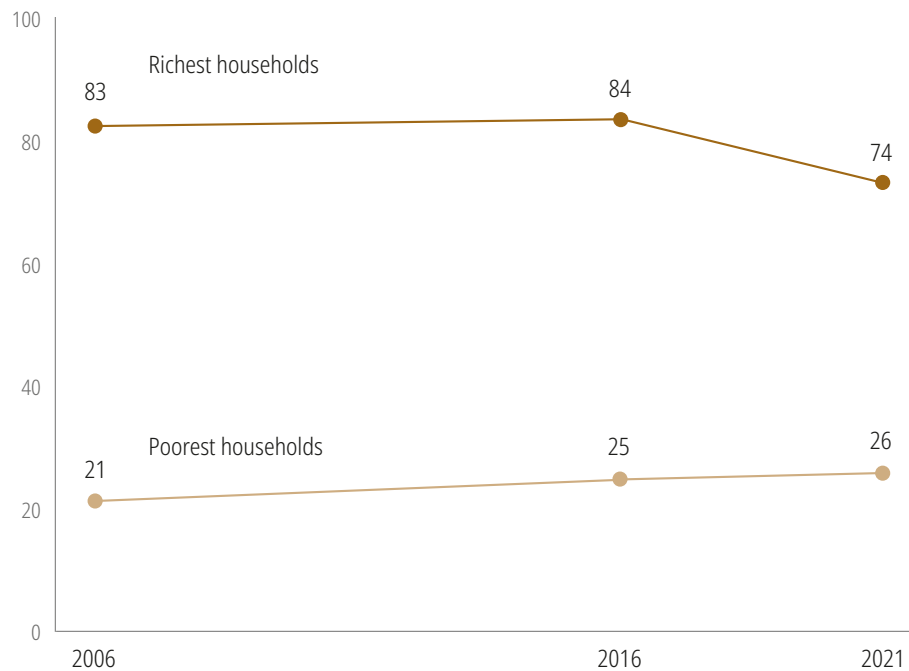
Percentage of infants under age 1 with a birth certificate



Infants in the richest households appear to have seen a decline in birth certification levels after 2016 while levels have only marginally increased over time among children in the poorest households

FIGURE 2.2

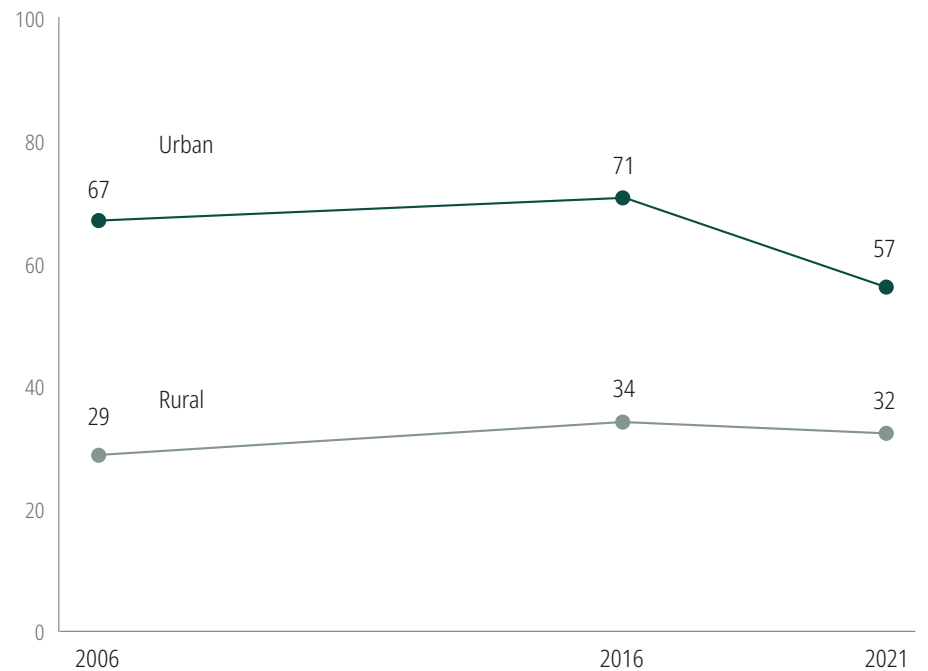
Percentage of infants under age 1 with a birth certificate, by household wealth quintile



Levels of certification have declined in more recent years among infants in urban areas, accompanied by stagnation among infants in rural areas

FIGURE 2.3

Percentage of infants under age 1 with a birth certificate, by place of residence



TECHNICAL NOTES

Data sources

The analysis of current levels of birth registration and certification in Côte d'Ivoire is based on the Demographic and Health Survey (DHS) 2021. This was the latest officially endorsed data source for global monitoring and reporting on SDG indicator 16.9.1 at the time this profile was produced. Data for other countries are from UNICEF global databases, 2025, based on Multiple Indicator Cluster Surveys (MICS), DHS, other nationally representative surveys and civil registration systems. For detailed source information by country, see <data.unicef.org>. Demographic data are from the United Nations Department of Economic and Social Affairs, Population Division, *World Population Prospects 2024*, Online Edition.

Methods for trend analysis

Since 2000, a total of five household surveys in Côte d'Ivoire (three MICS and two DHS) have collected data on birth registration. For the purposes of assessing trends at the national level, three surveys (2006, 2016 and 2021) were used, since these sources are broadly comparable in the way in which information on children's possession of a birth certificate was collected.



General notes and map disclaimer

Key message titles were developed taking into account confidence intervals. Thus, in cases where the title indicates a difference among demographic or population groups, it has been confirmed as statistically significant.

Maps are stylized and not to scale. They do not reflect a position by UNICEF on the legal status of any country or territory or the delimitation of any frontiers.

Endnotes

- 1 See Ministry of Interior and Security website, <<https://www.despse.ci/annuaires/>>.
- 2 The latest published estimate from the national civil statistics for the year 2024 stands at 58 per cent.

Permission is required to reproduce any part of this publication. Permission will be freely granted to educational or non-profit organizations.

To request permission or for any other information on this publication, please contact:

UNICEF Office of Strategy and Evidence – Innocenti
data@unicef.org

All reasonable precautions have been taken by UNICEF to verify the information contained in this publication. For any data updates subsequent to release, please visit <data.unicef.org>.

Acknowledgements

The preparation of this data profile was led by Claudia Cappa and Nicole Petrowski (UNICEF Office of Strategy and Evidence – Innocenti), with support from Munkhbadar Jugder (UNICEF Office of Strategy and Evidence – Innocenti). Inputs were provided by Sandrine Ndoly Kraidy, Mirkka Tuulia Mattila and Gnanmien Raoul Hermann Tano (UNICEF Côte d'Ivoire). It was edited by Lois Jensen and designed by Giovanna Burinato (independent consultants). The preparation of this data profile was made possible through a generous grant from the Norwegian Agency for Development Cooperation.

Suggested citation

United Nations Children's Fund, *Cote d'Ivoire: A statistical profile of birth registration*, UNICEF, Florence, 2026.

Photography

Cover: © UNICEF/UNI303187/Dejongh
Pages 5 and 6: © UNICEF/UNI516071/Dejongh



UNICEF Office of Strategy and Evidence – Innocenti
data@unicef.org, data.unicef.org