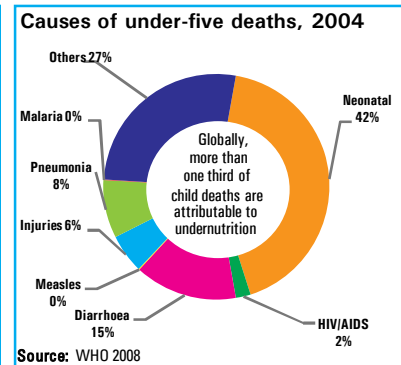
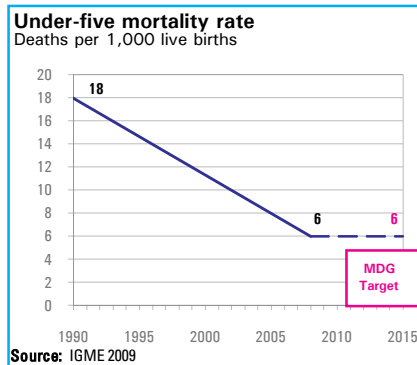


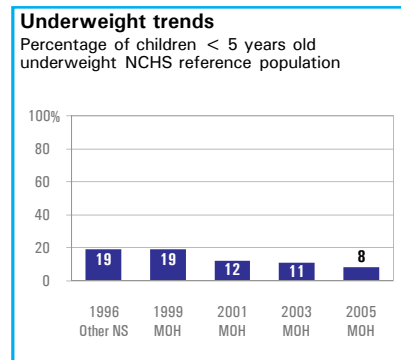
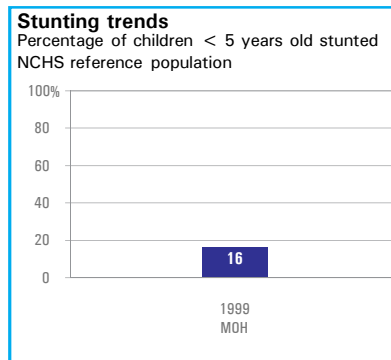
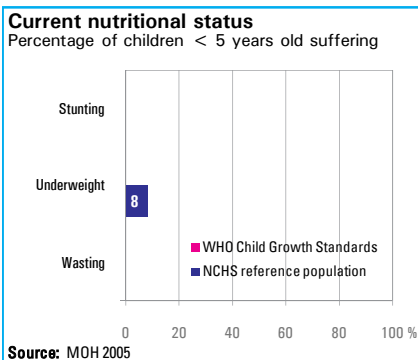
DEMOGRAPHICS

Total population (000)	27,014	(2008)
Total under-five population (000)	2,732	(2008)
Total number of births (000)	551	(2008)
Under-five mortality rate (per 1,000 live births)	6	(2008)
Total number of under-five deaths (000)	4	(2008)
Infant mortality rate (per 1,000 live births)	6	(2008)
Neonatal mortality rate (per 1,000 live births)	5	(2004)
HIV prevalence rate (15-49 years, %)	0.5	(2007)
Population below international poverty line of US\$1.25 per day (%)	< 2	(2004-2005)



NUTRITIONAL STATUS

Burden of undernutrition (2008) NCHS reference population	Stunted (under-fives, 000):	-	Underweight (under-fives, 000):	221
	Share of developing world stunting burden (%):	-	Wasted (under-fives, 000):	-
	Stunting country rank:	-	Severely wasted (under-fives, 000):	-



INFANT AND YOUNG CHILD FEEDING

Infant feeding practices, by age

No Data

- Weaned (not breastfed)
- Breastfed and solid/semi-solid foods
- Breastfed and other milk/formula
- Breastfed and non-milk liquids
- Breastfed and plain water only
- Exclusively breastfed

Exclusive breastfeeding

Percentage of infants < 6 months old breastfed

