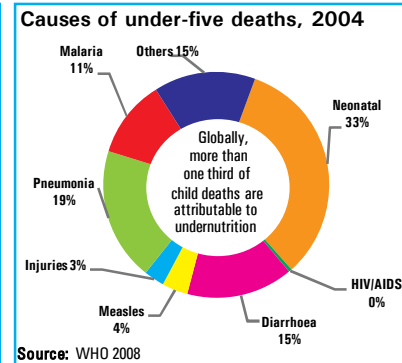
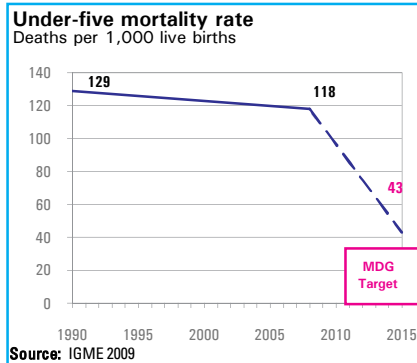


DEMOGRAPHICS

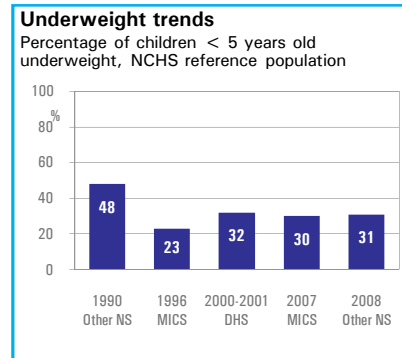
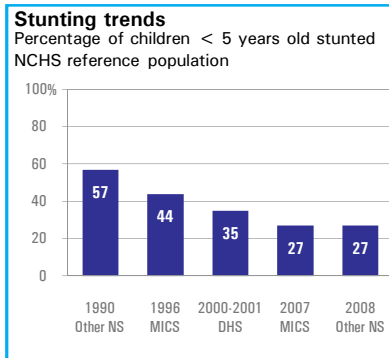
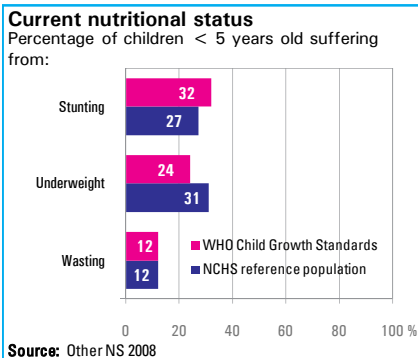
Total population (000)	3,215	(2008)
Total under-five population (000)	475	(2008)
Total number of births (000)	108	(2008)
Under-five mortality rate (per 1,000 live births)	118	(2008)
Total number of under-five deaths (000)	12	(2008)
Infant mortality rate (per 1,000 live births)	75	(2008)
Neonatal mortality rate (per 1,000 live births)	40	(2004)
HIV prevalence rate (15-49 years, %)	0.8	(2007)
Population below international poverty line of US\$1.25 per day (%)	21	(2000)



NUTRITIONAL STATUS

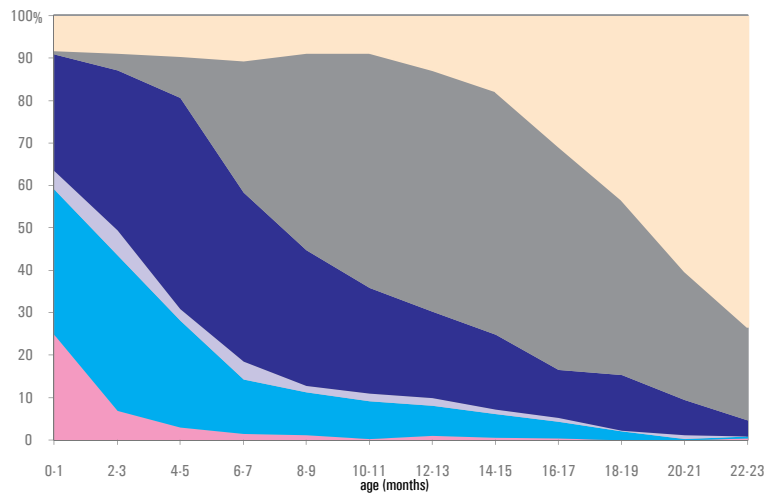
Burden of undernutrition (2008)
WHO Child Growth Standards

Stunted (under-fives, 000):	153	Underweight (under-fives, 000):	115
Share of developing world stunting burden (%):	0.1	Wasted (under-fives, 000):	58
Stunting country rank:	77	Severely wasted (under-fives, 000):	14



INFANT AND YOUNG CHILD FEEDING

Infant feeding practices, by age



Source: MICS 2007

Exclusive breastfeeding
Percentage of infants < 6 months old exclusively breastfed

