

# Libyan Arab Jamahiriya

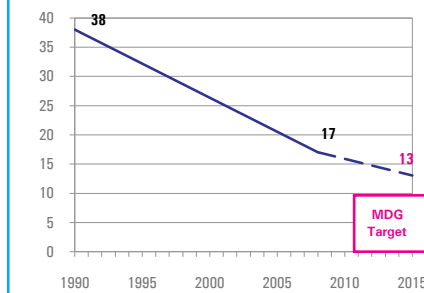
## Nutrition Profile

### DEMOGRAPHICS

Total population (000)	6,294	(2008)
Total under-five population (000)	700	(2008)
Total number of births (000)	147	(2008)
Under-five mortality rate (per 1,000 live births)	17	(2008)
Total number of under-five deaths (000)	2	(2008)
Infant mortality rate (per 1,000 live births)	15	(2008)
Neonatal mortality rate (per 1,000 live births)	11	(2004)
HIV prevalence rate (15-49 years, %)	-	-
Population below international poverty line of US\$1.25 per day (%)	-	-

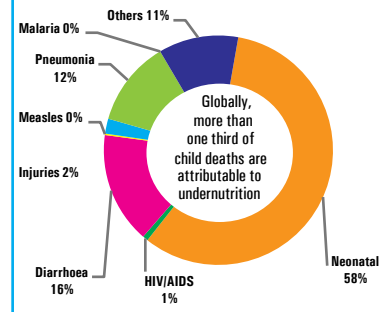
#### Under-five mortality rate

Deaths per 1,000 live births



Source: IGME 2009

#### Causes of under-five deaths, 2004



Source: WHO 2008

### NUTRITIONAL STATUS

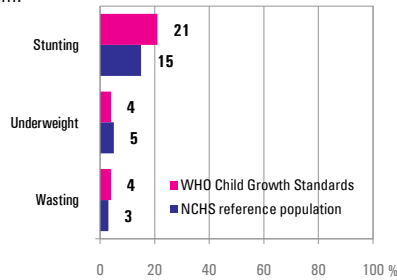
#### Burden of undernutrition (2008)

WHO Child Growth Standards

Stunted (under-fives, 000):	145	Underweight (under-fives, 000):	30
Share of developing world stunting burden (%):	0.1	Wasted (under-fives, 000):	26
Stunting country rank:	79	Severely wasted (under-fives, 000):	0

#### Current nutritional status

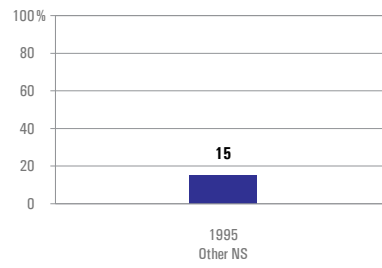
Percentage of children < 5 years old suffering from:



Source: Other NS 1995

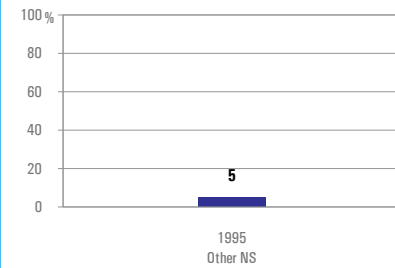
#### Stunting trends

Percentage of children < 5 years old stunted NCHS reference population



#### Underweight trends

Percentage of children < 5 years old underweight, NCHS reference population



### INFANT AND YOUNG CHILD FEEDING

#### Infant feeding practices, by age

- Weaned (not breastfed)
- Breastfed and solid/semi-solid foods
- Breastfed and other milk/formula
- Breastfed and non-milk liquids
- Breastfed and plain water only
- Exclusively breastfed

No Data

#### Exclusive breastfeeding

Percentage of infants < 6 months old exclusively breastfed

No Data

