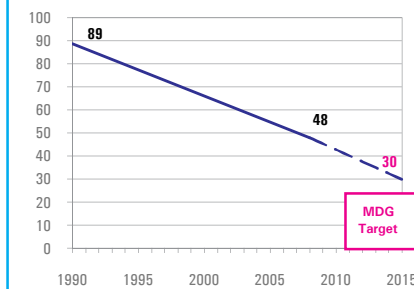


### DEMOGRAPHICS

Total population (000)	97	(2008)
Total under-five population (000)	10	(2008)
Total number of births (000)	2	(2008)
Under-five mortality rate (per 1,000 live births)	48	(2008)
Total number of under-five deaths (000)	0	(2008)
Infant mortality rate (per 1,000 live births)	38	(2008)
Neonatal mortality rate (per 1,000 live births)	25	(2004)
HIV prevalence rate (15-49 years, %)	-	-
Population below international poverty line of US\$1.25 per day (%)	-	-

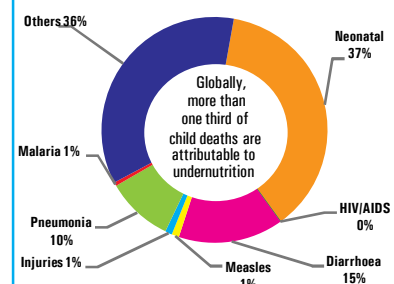
#### Under-five mortality rate

Deaths per 1,000 live births



Source: IGME 2009

#### Causes of under-five deaths, 2004



Source: WHO 2008

### NUTRITIONAL STATUS

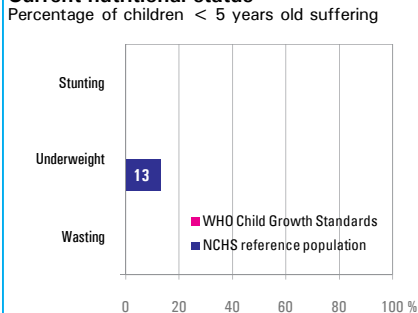
#### Burden of undernutrition (2008)

NCHS reference population

Stunted (under-fives, 000):	-	Underweight (under-fives, 000):	1
Share of developing world stunting burden (%):	-	Wasted (under-fives, 000):	-
Stunting country rank:	-	Severely wasted (under-fives, 000):	-

#### Current nutritional status

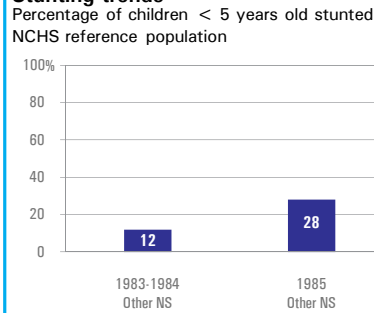
Percentage of children < 5 years old suffering



Source: Other NS 1999

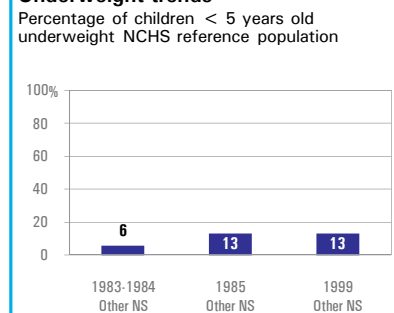
#### Stunting trends

Percentage of children < 5 years old stunted



#### Underweight trends

Percentage of children < 5 years old underweight



### INFANT AND YOUNG CHILD FEEDING

#### Infant feeding practices, by age

No Data

- Weaned (not breastfed)
- Breastfed and solid/semi-solid foods
- Breastfed and other milk/formula
- Breastfed and non-milk liquids
- Breastfed and plain water only
- Exclusively breastfed

#### Exclusive breastfeeding

Percentage of infants < 6 months old breastfed

