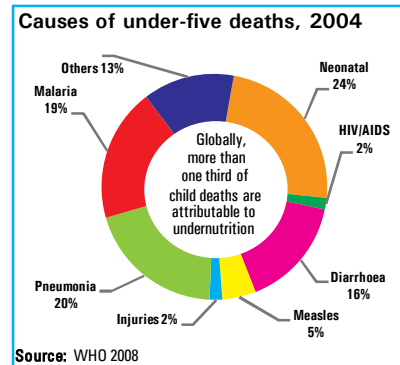
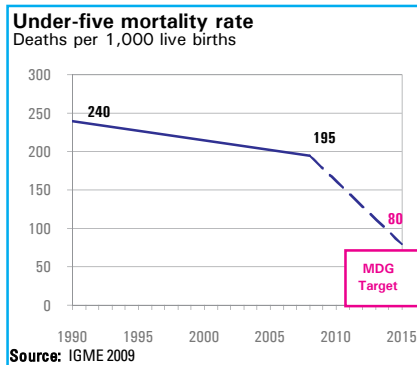


### DEMOGRAPHICS

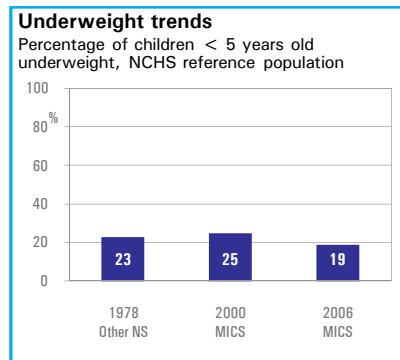
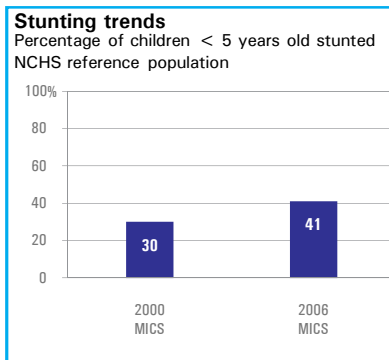
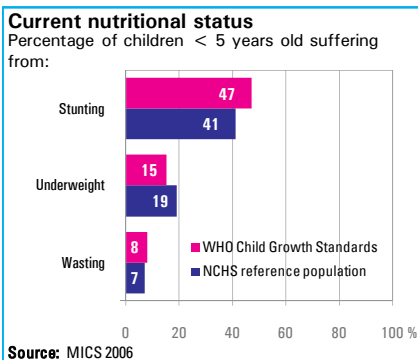
Total population (000)	1,575	(2008)
Total under-five population (000)	265	(2008)
Total number of births (000)	65	(2008)
Under-five mortality rate (per 1,000 live births)	195	(2008)
Total number of under-five deaths (000)	12	(2008)
Infant mortality rate (per 1,000 live births)	117	(2008)
Neonatal mortality rate (per 1,000 live births)	47	(2004)
HIV prevalence rate (15-49 years, %)	1.8	(2007)
Population below international poverty line of US\$1.25 per day (%)	49	(2002-2003)



### NUTRITIONAL STATUS

**Burden of undernutrition (2008)**  
WHO Child Growth Standards

Stunted (under-fives, 000):	125	Underweight (under-fives, 000):	40
Share of developing world stunting burden (%):	0.1	Wasted (under-fives, 000):	22
Stunting country rank:	82	Severely wasted (under-fives, 000):	11



### INFANT AND YOUNG CHILD FEEDING

#### Infant feeding practices, by age

No Data

- Weaned (not breastfed)
- Breastfed and solid/semi-solid foods
- Breastfed and other milk/formula
- Breastfed and non-milk liquids
- Breastfed and plain water only
- Exclusively breastfed

**Exclusive breastfeeding**  
Percentage of infants < 6 months exclusively breastfed

